

ARE ORGANISATIONS IN AUSTRALIA EMPOWERING THEIR EMPLOYEES FOR THE DIGITAL WORKPLACE?

There is a new way of working. Access to mobile devices and cloud applications have driven increased ability of working professionals to work from anywhere. In addition, more people are working across virtual teams than ever before. The reality, however, is that organizations are falling behind on addressing the needs of a digitally-enabled workforce and this needs to change.

The Microsoft Asia Workplace 2020 Study involving 311 working professionals from Australia sought to find out gaps that are hindering flexi-work practices, productivity and the new world of teams.

EMPLOYEE WORKSTYLES ARE CHANGING

66%

spend at least 1 work day outside of the office

72%

value work-life integration

ENABLING DIGITAL SKILLS IS A KEY ENABLER OF DIGITAL TRANSFORMATION

Based on Microsoft Asia's Digital Transformation Study¹, empowering employees with digital skills was the #2 priority for business leaders. However, the Study shows that employers have some catching up to do.

ONLY 32%

agree that their organization is committed at the leadership level to close the digital skills gaps within the workforce

ONLY 45%

are empowered by their organizations to embrace flexi-work

ONLY 48 IN 100

respondents feel that their organization is equipped for the Digital Workplace

TOP TEAMWORK CHALLENGES

- 1 **24%**
Too many face to face meetings
- 2 **23%**
Teams are too rigid
- 3 **20%**
Teams take too long to respond
- 4 **16%**
Team members are not accommodating of flexi-work

TOP 3 ATTRIBUTES IN CREATING COLLABORATIVE TEAMS

- 1 **41%**
Support from managers
- 2 **38%**
Strong leadership and vision
- 3 **31%**
Diverse team members

EMPLOYEES' WISH LIST FOR IMPROVING COLLABORATION

1



Better hardware devices
(PCs, laptops, smartphones)

2



Access to information & data on mobile devices

3



Cloud-based productivity tools

4



Real-time collaboration capabilities

EMERGING TECHNOLOGIES TO HELP BUILD BETTER WORK ENVIRONMENTS BY 2020

1



Real-time intelligence that will help them make informed decisions at work

2



Artificial Intelligence will be able to help perform tasks independently

3



Virtual workspaces that support Instant Messaging and document sharing

INTRODUCING MICROSOFT TEAMS

A new chat-based workspace for instant collaboration, anytime, anywhere, and integrated on Office 365

CHAT FOR TODAY'S TEAMS



Provides a modern conversations experience, with threaded, persistent chat to keep everyone engaged

HUB FOR TEAMWORK



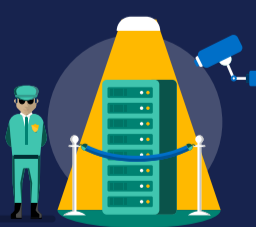
The Office applications and services that teams use every day are all built-in, so people have the information and tools they need.

CUSTOMIZATION FOR EVERY TEAM



Offers the ability to customize work spaces with tabs, connectors and bots from third-party partners as well as familiar Microsoft tools like Microsoft Planner and Visual Studio Team Services.

SECURITY TEAMS TRUST



Built on the hyper-scale, enterprise-grade Office 365 cloud, delivering the advanced security and compliance capabilities our customers expect.

Find out more about Microsoft Teams at <https://aka.ms/microsoftteams>

The Microsoft Asia Workplace 2020 Study was conducted between February and March 2017 involving 4,175 respondents in 14 Asia markets. The 14 markets include Australia, China, Hong Kong, Indonesia, India, Japan, Korea, Malaysia, New Zealand, the Philippines, Singapore, Taiwan and Thailand. All respondents were pre-qualified as at least spending 30 hours per week in a full-time role, or spending at least 20 hours per week in a part time role.

¹ The Microsoft Asia Digital Transformation Study was conducted between October to November 2016 involving 1,494 business leaders in 13 Asia Pacific markets. The 13 markets include Australia, China, Hong Kong, Indonesia, India, Japan, Korea, Malaysia, New Zealand, the Philippines, Singapore, Taiwan and Thailand. All respondents were pre-qualified as being involved in shaping their organisations' digital strategy, and are working in firms with more than 250 employees.